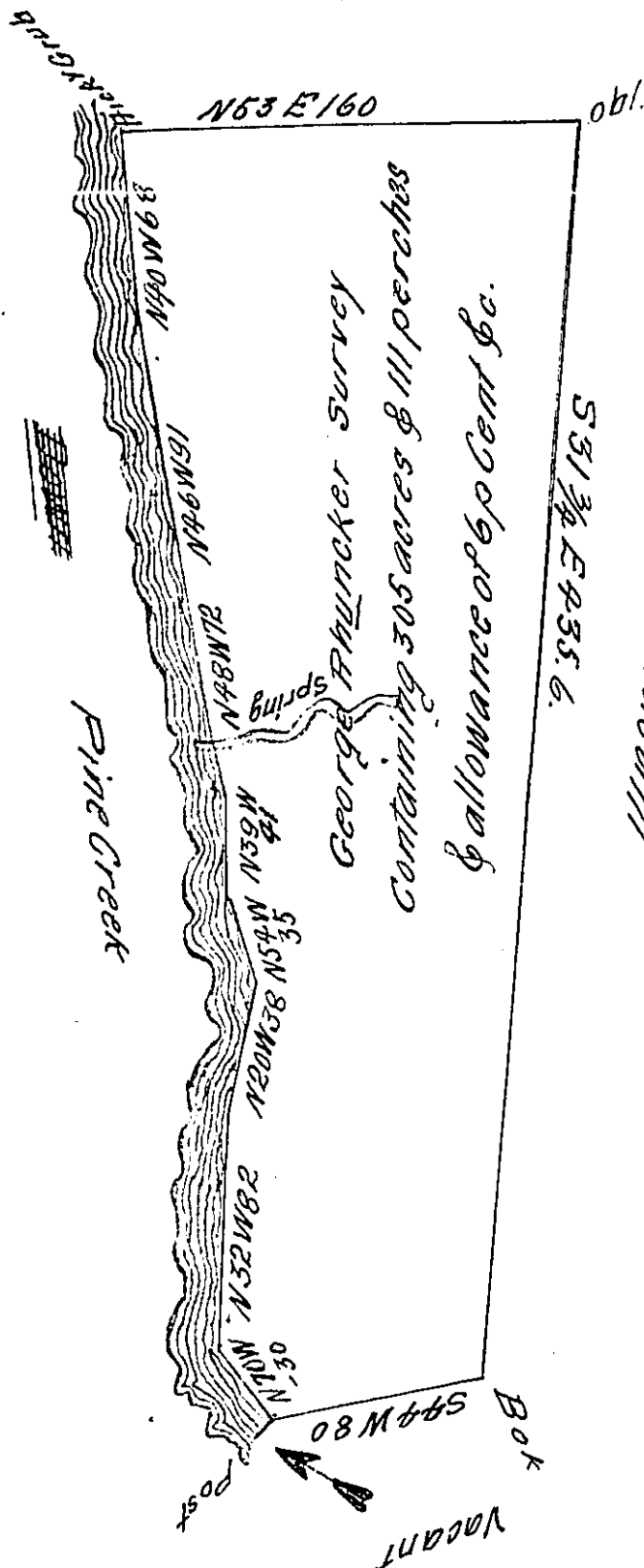


James Hep (obl)



A Draught of a tract of Land Situated about three Miles up pine Creek  
 on Said Creek Survey'd 13<sup>th</sup> of December 1785 for George Rhinck-  
 ker and preemption warrant Dated on the fourteenth of June.  
 1785 Containing three Hundred & five Acres & one Hundred &  
 Eleven perches & allowance of six p Cent & c — — —

John Lukens Esq' }  
 15 Decr '85

Saml Edmiston

D. Surveyr.  
*[Signature]*

IN TESTIMONY that the above is a copy of the original remaining on file in  
 the Department of Internal Affairs of Pennsylvania, made  
 conformably to an Act of Assembly approved the 16th day of  
 February, 1833, I have hereunto set my Hand and caused  
 the Seal of said Department to be affixed at Harrisburg,  
 this twenty first day of October 1911

*[Signature]*  
 Secretary of Internal Affairs.